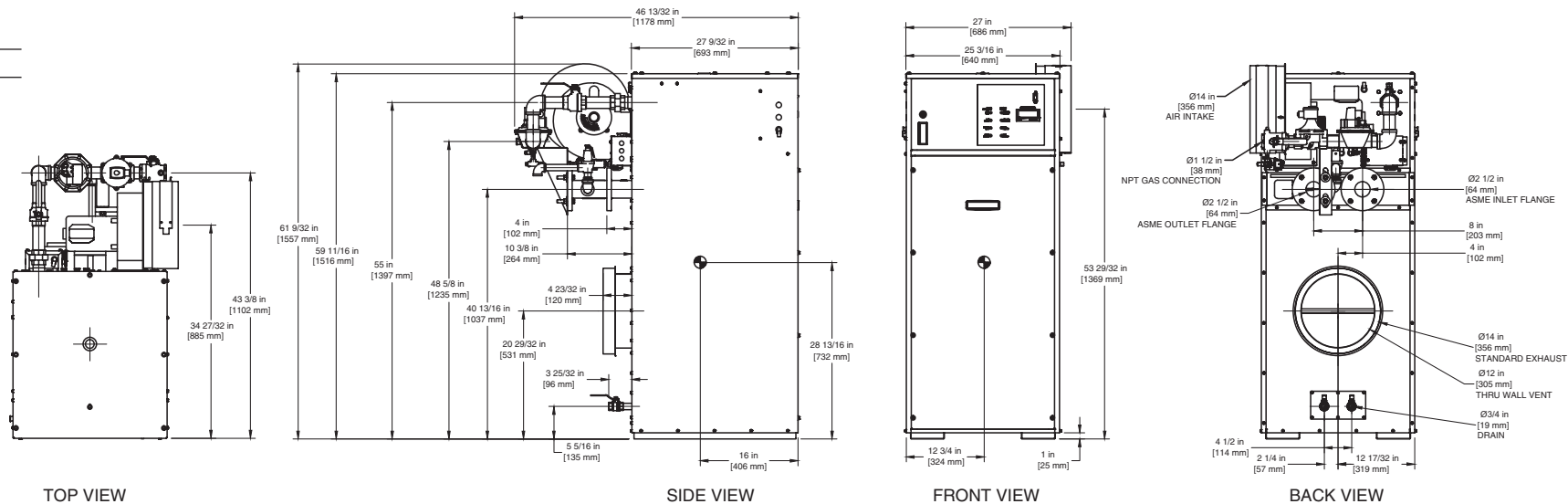


INDOOR UNIT

RSUB-69 REV D

CODE OPTIONS

| | |
|-------|-------------------|
| CSD-1 | Manual Reset LWCO |
|-------|-------------------|



- Notes:
- 1. Dimensions are approximate and should not be used to "rough-in" equipment.
 - 2. Dimensions are subject to change without notice.

BOILER CERTIFIED RATINGS & CAPACITIES

| | | | |
|-------------------------|------------------------|----------------------------|--------------------|
| Fuel Type | Natural/Propane Gas | Boiler FLA | 11.5* |
| Input BTU/hr. | 1,750,000 / 513 kW | Min. Gas Pressure Required | 5"W.C.** |
| Output BTU/hr. | 1,487,500 / 436 kW | Max. Gas Pressure Allowed | 14"W.C. |
| Electrical Requirements | 120 VAC / 1 ph / 60 hz | Operating Weight | 799 lbs. / 363 kg. |

BOILER TEMPERATURE RISE / PRESSURE DROP

| 25°F / 13.9°C | | | | 30°F / 16.7°C | | | | 35°F / 19.4°C | | | |
|---------------|-----|---------------|------|---------------|-----|---------------|-----|---------------|-----|---------------|-----|
| Flow Rate | | Pressure Drop | | Flow Rate | | Pressure Drop | | Flow Rate | | Pressure Drop | |
| GPM | L/s | Ft | kPa | GPM | L/s | Ft | kPa | GPM | L/s | Ft | kPa |
| 119.0 | 7.5 | 3.67 | 10.8 | 99.2 | 6.3 | 2.60 | 7.7 | 85.0 | 5.4 | 2.00 | 5.8 |

BOILER / WATER HEATER TRIM & CONTROLS

| | | | |
|---------------------------|--------------------|-------------------|---------------------------|
| Main Gas Valve | V4944B | Main Ball Valve | 1 1/2" |
| Firing Valve | 1 1/2" | Pilot Regulator | White-Rodgers 25M |
| Safety Valve | ASCO L8214G 1 1/2" | Air Switch | HUBA |
| Ignition Control | Honeywell RM7897C | Blower Motor | Marathon 3/4 hp - FLA 9.8 |
| Operating Control (FB/FW) | Jumo | Relief Valve - FB | 1" x 1 1/4" set @ 50 psi |
| High Limit | Honeywell L4008E | Relief Valve - FW | 3/4" x 3/4" set @ 125 psi |
| | | Flow Switch | TACO |

WATER HEATER HOURLY RECOVERY CAPACITY (GPH & LPH)

| | | | | | | | | | | | |
|------|-------|------|-------|------|------|-------|------|-------|------|-------|------|
| 40°F | 22°C | 60°F | 33°C | 80°F | 44°C | 100°F | 56°C | 120°F | 67°C | 140°F | 78°C |
| 4359 | 16478 | 2906 | 10985 | 2180 | 8239 | 1744 | 6591 | 1453 | 5493 | 1245 | 4708 |

Boilers & Water Heaters not available for sale in Canada due to NRCan regulations.

A.S.M.E.

| | | | |
|--------------------------|-------------------------------|-------------|-----------------------|
| ASME Sect IV Htg Surface | 188.57 Sq. Ft. / 17.52 Sq. M. | Design Data | Max. 160 psig & 250°F |
| Water Volume | 5.3 gal / 20.1 Liters | | |

- * Add circulator amps.
- ** For incoming gas pressures lower than 5" W.C. natural or 11" W.C. propane, consult factory.

REP FIRM _____

SUBMITTED BY _____

JOB NAME _____

ARCHITECT _____

ENGINEER _____

CONTRACTOR _____

DATE _____

FUTERA II 1750

Category I or Category III Appliance

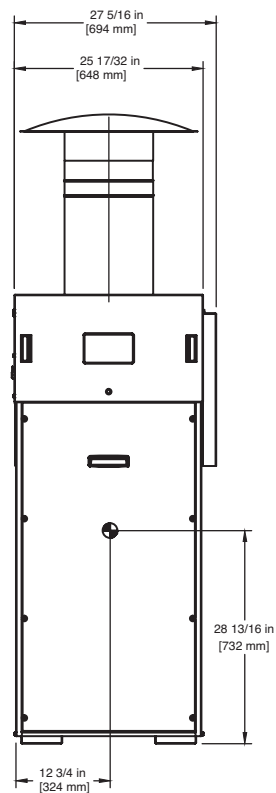
(see Installation and Operation Manual for venting information)

RBI® A Division of Mestek, Inc.
Westfield, MA 01085
(413) 568-9571

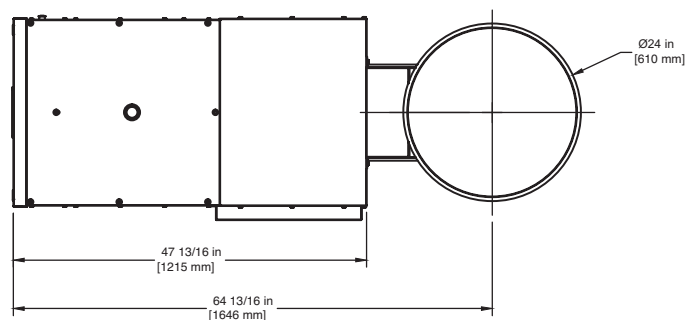
RELIABLE. BOLD. INNOVATIVE.

OUTDOOR UNIT

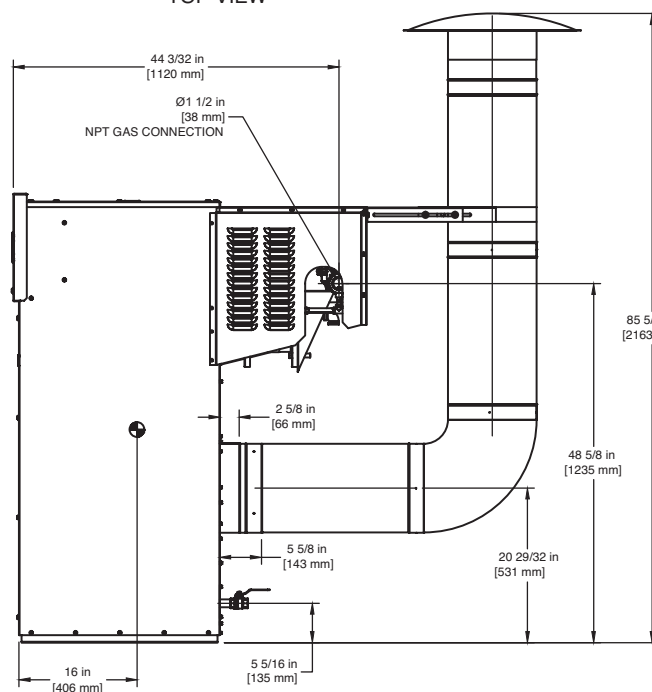
RSUB-156



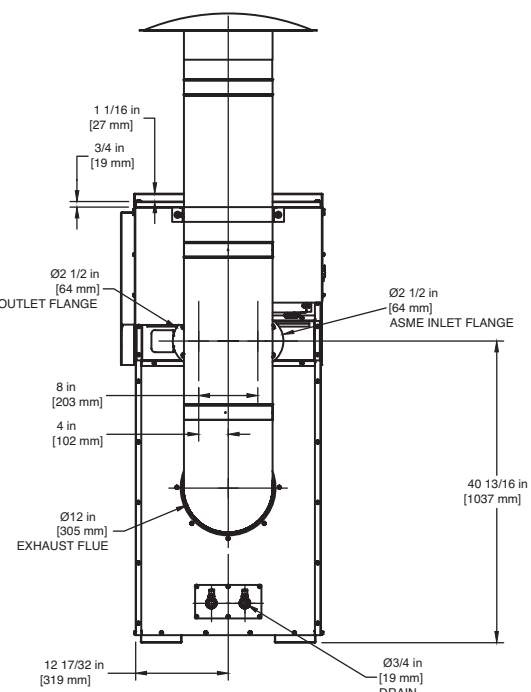
FRONT VIEW



TOP VIEW



SIDE VIEW



BACK VIEW

FUTERA II 1750

Boilers & Water Heaters not available for sale in Canada due to NRCan regulations.

Notes:

1. Dimensions are approximate and should not be used to "rough-in" equipment.
2. Dimensions are subject to change without notice.